

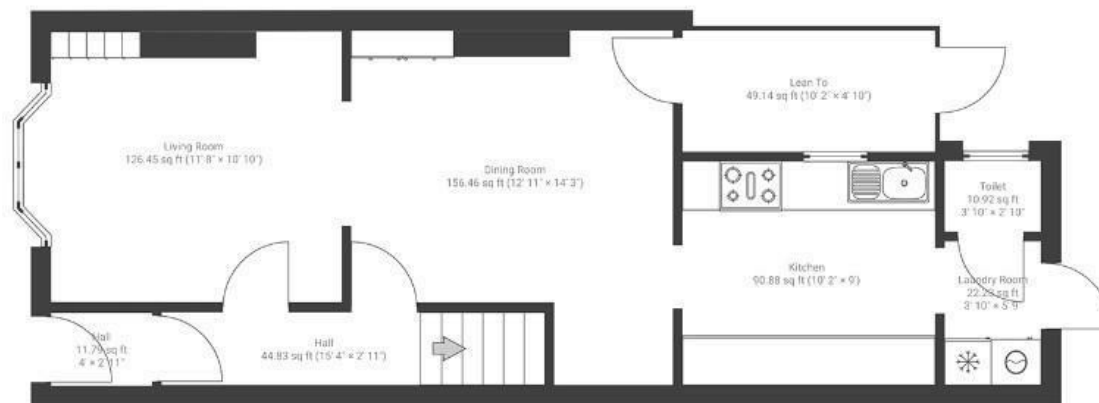
# Newbridge Road

## ST. ANNES

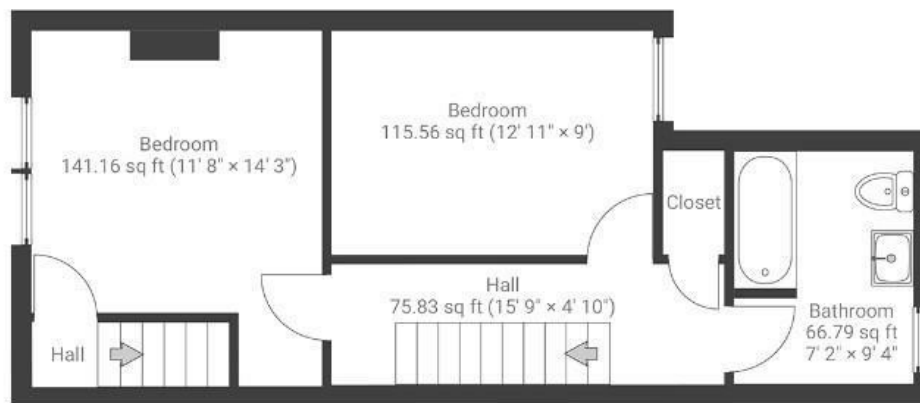
APPROXIMATE FLOOR AREA  
115 SQM / 1242 SQFT



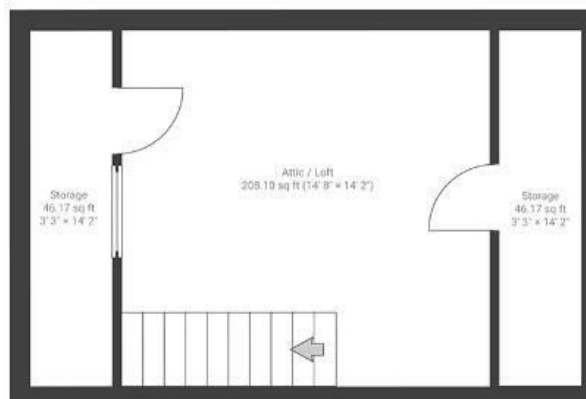
### GROUND FLOOR



### FIRST FLOOR



### LOFT



**Boardwalk**

# Newbridge Road , BRISTOL

£

£385,000



BS4 4DJ

zzz

2 Bedrooms



2 Bathrooms

*"We moved to Newbridge Road a few months before the pandemic hit and spent the following two years confined to our house, building a home, growing a family and watching countless sunsets over the city from our garden. Since then our home has remained our safe space, a hub for family gatherings, kids birthday parties, drinks with the neighbours or just a cosy spot for hunkering down in front of the fire with a glass of wine. St. Anne's was a relatively unknown neighbourhood to us but has become a community that we centre so many of our weekends around. Parties and live music at the pub, the sauna at St. Anne's House, Blind Owl Coffee, the woods, the valley, art trails and all the wonderful people that come with it."*

